

List of pages in this Trip Kit

Trip Kit Index

Airport Information For HJJJ

Terminal Charts For HJJJ

Revision Letter For Cycle 16-2023

Change Notices

Notebook

General Information

Location: JUBA SDN
ICAO/IATA: HJJJ / JUB
Lat/Long: N04° 52.32', E031° 36.07'
Elevation: 1512 ft

Airport Use: Public
Daylight Savings: Not Observed
UTC Conversion: -2:00 = UTC
Magnetic Variation: 3.0° E

Fuel Types: Jet A-1
Customs: Yes
Airport Type: IFR
Landing Fee: Yes
Control Tower: Yes
Jet Start Unit: No
LLWS Alert: No
Beacon: Yes

Sunrise: 0341 Z
Sunset: 1535 Z

Runway Information

Runway: 13
Length x Width: 10171 ft x 148 ft
Surface Type: asphalt
TDZ-Elev: 1508 ft
Lighting: Edge, ALS, Centerline
Stopway: 197 ft

Runway: 31
Length x Width: 10171 ft x 148 ft
Surface Type: asphalt
TDZ-Elev: 1510 ft
Lighting: Edge, ALS, Centerline
Stopway: 197 ft

Communication Information

ATIS: 123.500
Juba Tower: 118.400
Juba Ground: 121.900
Juba Approach: 118.400 Secondary
Juba Approach: 123.900

HJJJ/JUB
JUBA

JEPPESEN

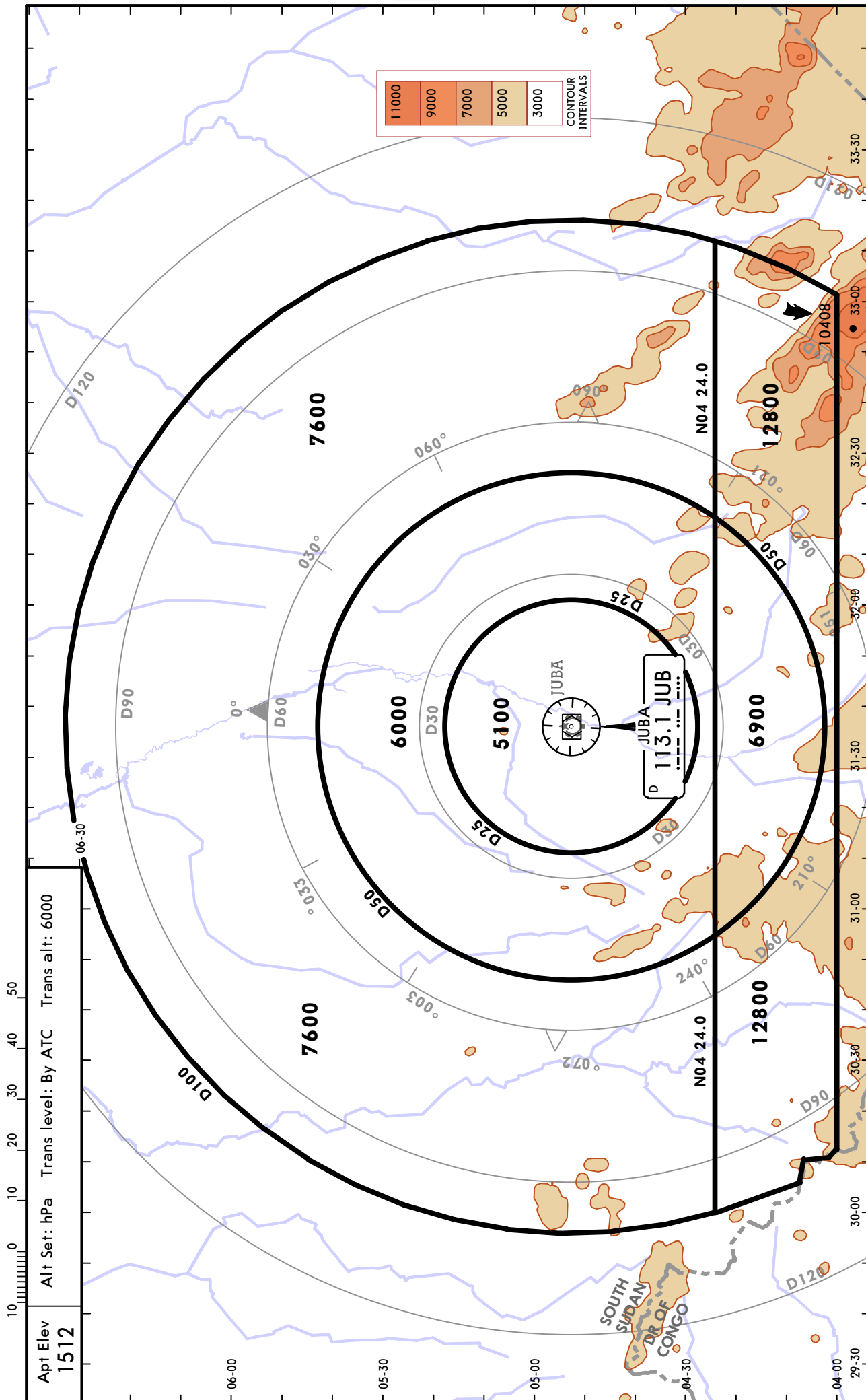
JUBA, SOUTH SUDAN

14 APR 23

10-1R

Eff 20 Apr

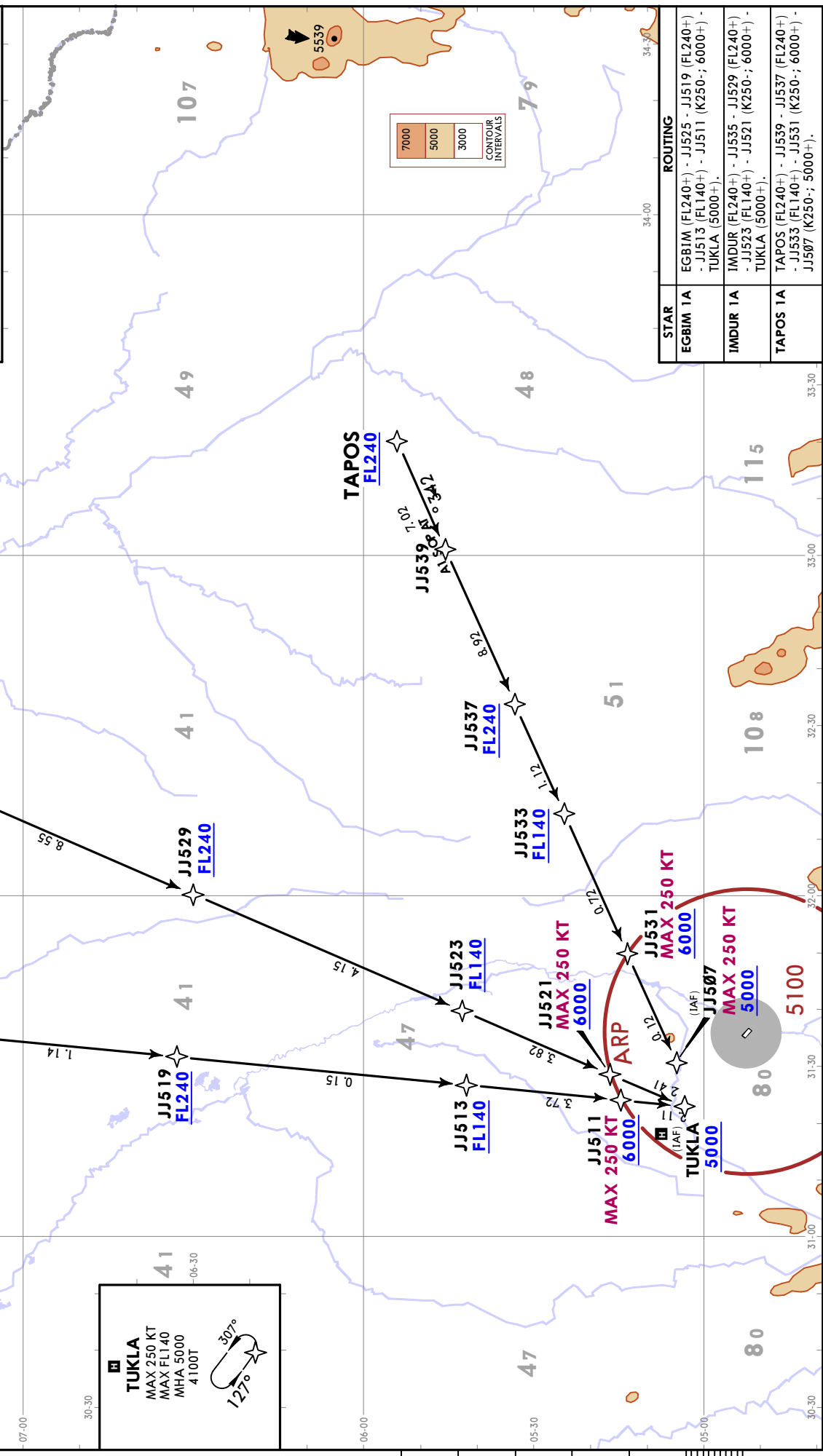
RADAR MINIMUM ALTITUDES



JEPPesen JUBA, SOUTH SUDAN
 14 APR 23 (10-2) Eff: 20 Apr. **RNAV STAR**

ATIS 123.5 Apt Elev 1512
 Alt Set: hPa Trans level: By ATC
 RNAV 1 required GNSs only

**EGBIM 1A [EGBI1A]
 IMDUR 1A [IMDU1A]
 TAPOS 1A [TAPO1A]
 RNAV (GNS) ARRIVALS
 (RWY 13)**



STAR	ROUTING
EGBIM 1A	EGBIM (FL240+) - JJ519 (FL240+) - JJ513 (FL140+) - JJ511 (K250-; 6000+) - TUKLA (5000+).
IMDUR 1A	IMDUR (FL240+) - JJ529 (FL240+) - JJ523 (FL140+) - JJ521 (K250-; 6000+) - TUKLA (5000+).
TAPOS 1A	TAPOS (FL240+) - JJ539 (FL240+) - JJ537 (FL240+) - JJ533 (FL140+) - JJ531 (K250-; 6000+) - JJ507 (K250-; 5000+).

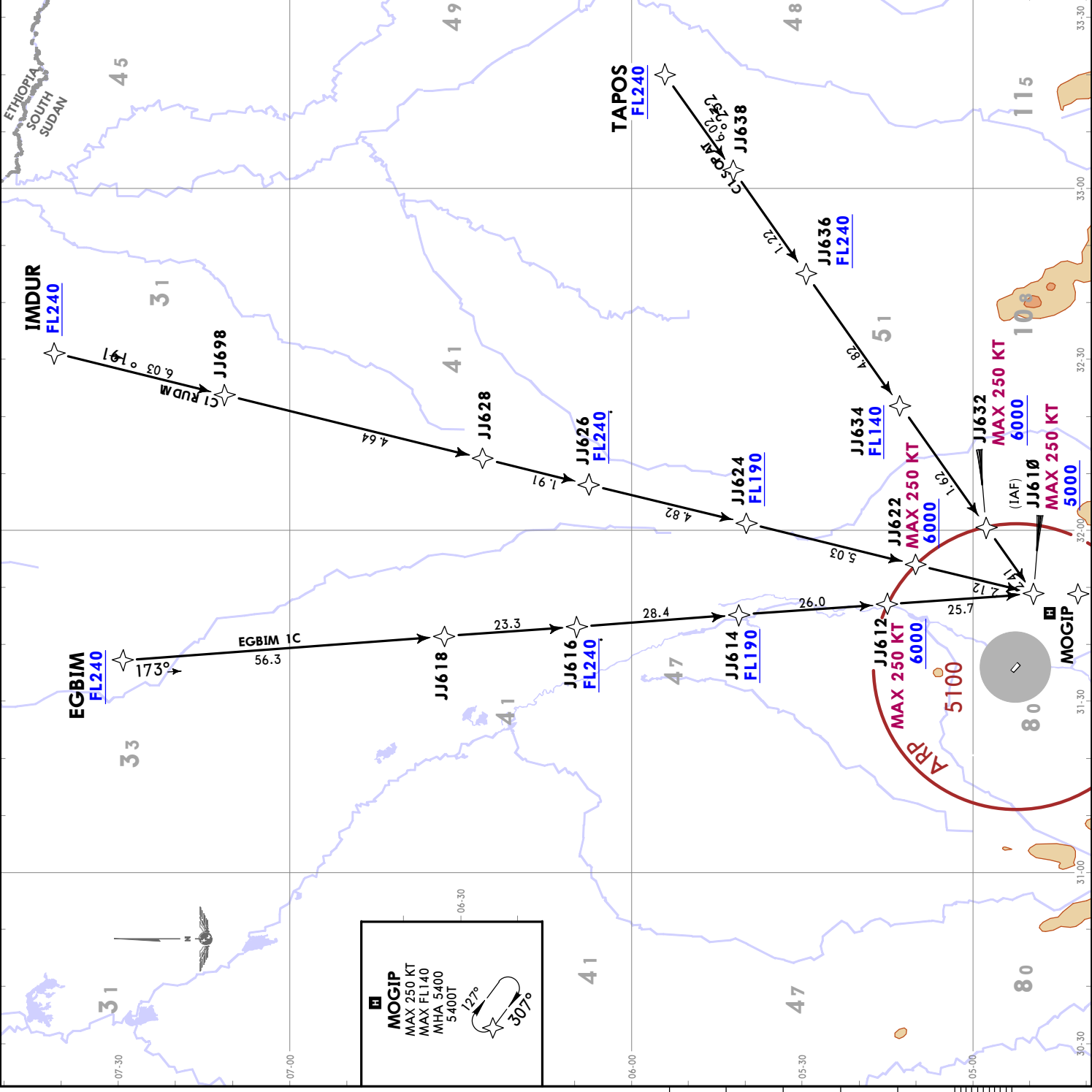
HJJJ/JUBA
 JUBA

TUKLA
 MAX 250 KT
 MAX FL140
 MHA 5000
 4100T

30%
 127°

JEPPESEN JUBA, SOUTH SUDAN
 14 APR 23 (10-2B) Eff: 20 Apr

RNAV STAR	
ATIS	Apt Elev
123.5	1512
Alt Ser: hPa Trans level: By ATC	
RNAV 1 required GNSS only	
EGBIM 1C [EGBI1C] IMDUR 1C [IMDU1C] TAPOS 1C [TAPO1C] RNAV (GNSS) ARRIVALS (RWY 31)	



M MOGIP MAX 250 KT MAX FL140 MHA 5400 5400T 127° 307°
--

STAR	ROUTING
EGBIM 1C	EGBIM (FL240+) - JJ618 - JJ616 (FL240+) - JJ614 (FL190+) - JJ612 (K250-; 6000+) - JJ610 (K250-; 5000+)
IMDUR 1C	IMDUR (FL240+) - JJ698 - JJ628 - JJ626 (FL240+) (FL240+) - JJ624 (FL190+) - JJ622 (K250-; 6000+) - JJ610 (K250-; 5000+)
TAPOS 1C	TAPOS (FL240+) - JJ638 - JJ636 (FL240+) - JJ634 (FL140+) - JJ632 (K250-; 6000+) - JJ610 (K250-; 5000+)

HJJJ/JUB
 JUBA

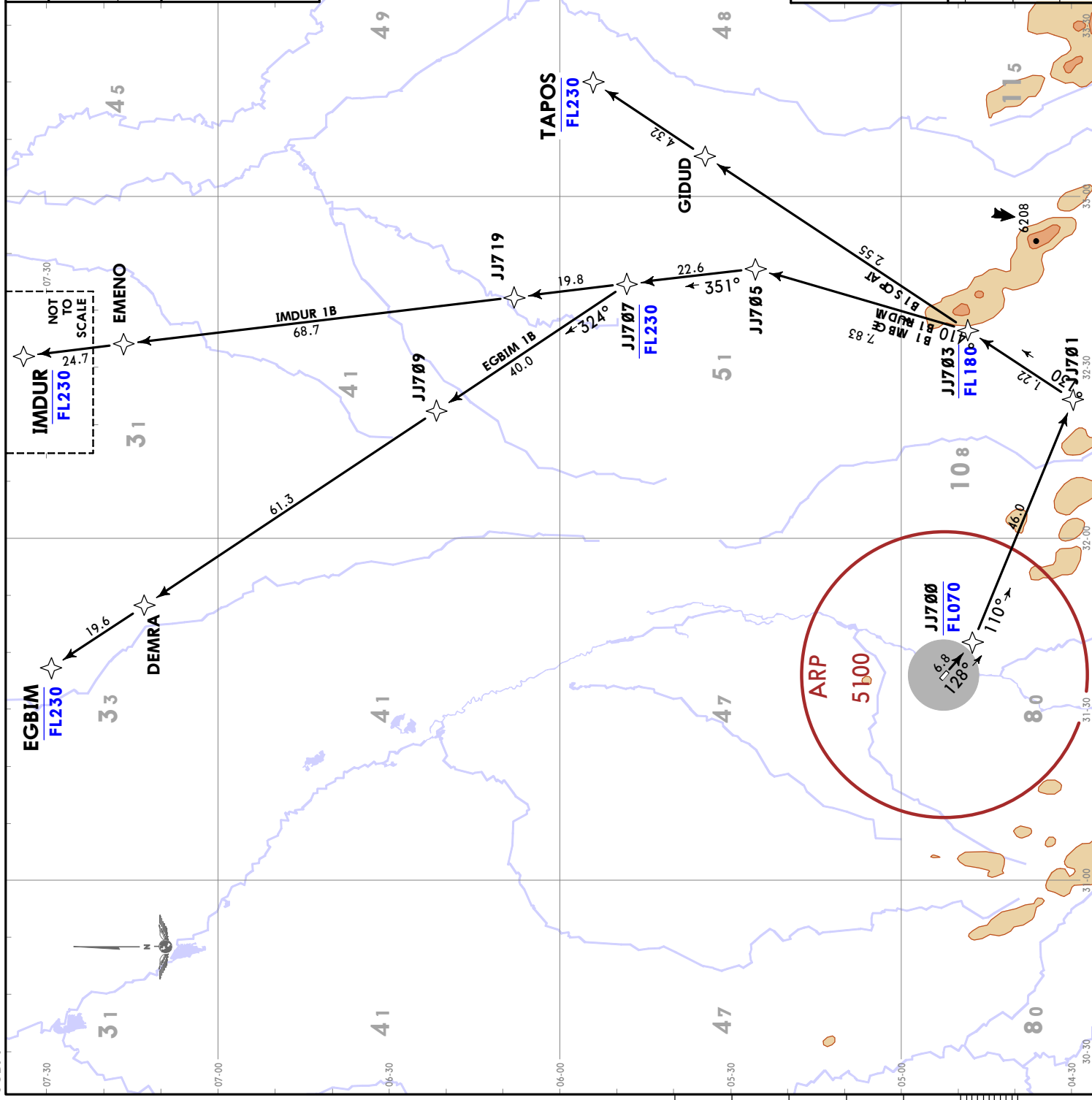
JEPPESEN JUBA, SOUTH SUDAN
 14 APR 23 (10-3) Eff: 20 Apr. RNAV SID

Apt Elev
1512

Trans alt: 6000
 EXPECT close-in obstacles after take-off.
 EXPECT a 'Direct to' waypoint. If cleared by ATC,
 remain above the AMA.

RNAV 1 required
 GNSS only

**EGBIM 1B [EGBI1B]
 IMDUR 1B [IMDU1B]
 TAPOS 1B [TAPO1B]
 RNAV (GNSS) DEPARTURES
 (RWY 13)**



These SIDs require a minimum climb gradient of 3.9% up to 1800.

Gnd speed-KT	75	100	150	200	250	300
3.9% V/V (fpm)	296	395	592	790	987	1185

Close-in Obstacle:
 1631 located 0.6NM from end of RWY, 0.2NM on the RIGHT side of the RWY axis.

SID	ROUTING
EGBIM 1B	Climb on 128° track to JJ700, to JJ701, to JJ703, to JJ705, to JJ707, to JJ709, to DEMRA, to EGBIM.
IMDUR 1B	Climb on 128° track to JJ700, to JJ701, to JJ703, to JJ705, to JJ707, to JJ719, to EMBENO, to IMDUR.
TAPOS 1B	Climb on 128° track to JJ700, to JJ701, to JJ703, to GIDUD, to TAPOS.

HJJJ/JUBA
 JUBA

JEPPESEN JUBA, SOUTH SUDAN
RNAV SID

HJJJ/JUBA
JUBA

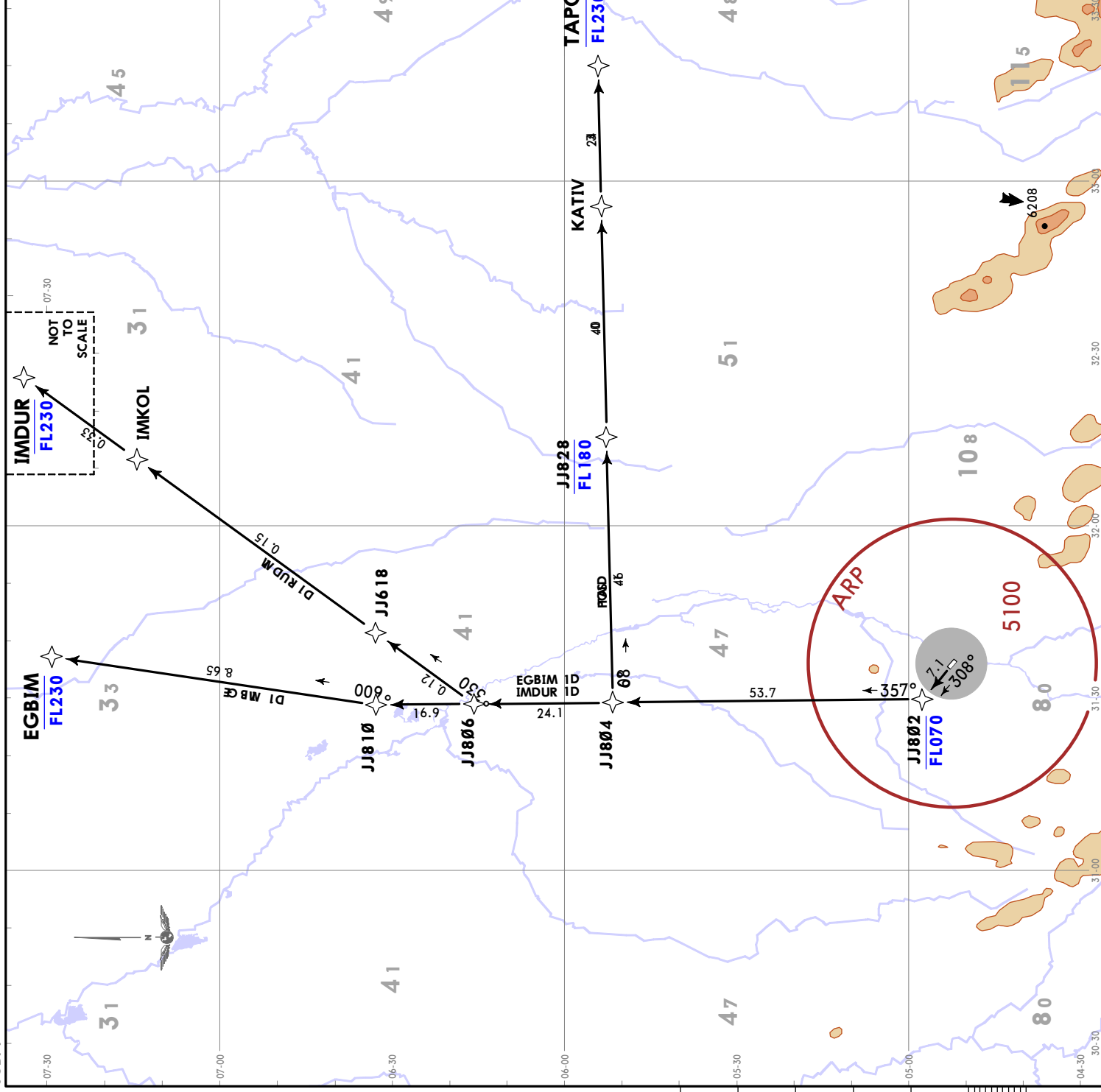
14 APR 23 (10-3B) Eff: 20 Apr

Apt Elev
1512

Trans alt: 6000
 EXPECT a 'Direct to' waypoint. If cleared by ATC, remain above the AMA.

RNAV 1 required
 GNSS only

**EGBIM 1D [EGBI1D]
 IMDUR 1D [IMDU1D]
 TAPOS 1D [TAPO1D]
 RNAV (GNSS) DEPARTURES
 (RWY 31)**



SID	ROUTING
EGBIM 1D	Climb on 308° track to JJ802, to JJ804, to JJ806, to JJ810, to EGBIM.
IMDUR 1D	Climb on 308° track to JJ802, to JJ804, to JJ806, to JJ618, to IMKOL, to IMDUR.
TAPOS 1D	Climb on 308° track to JJ802, to JJ804, to JJ828, to KATIV, to TAPOS.

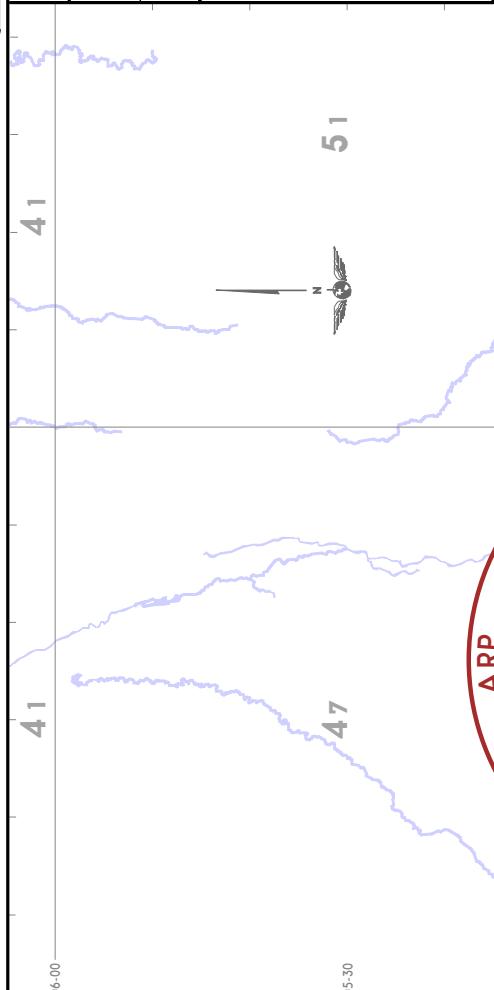
Apt Elev
1512

Trans alt: 6000
 EXPECT a 'Direct to' waypoint. If cleared by ATC, remain above the AMA.

RNAV 1 required
 GNSS only

**ATUGA 1D [ATUG1D]
 EPLAS 1D [EPLA1D]
 KABLA 1D [KABL1D]
 OVELA 1D [OVEL1D]
 SAGBU 1D [SAGB1D]**

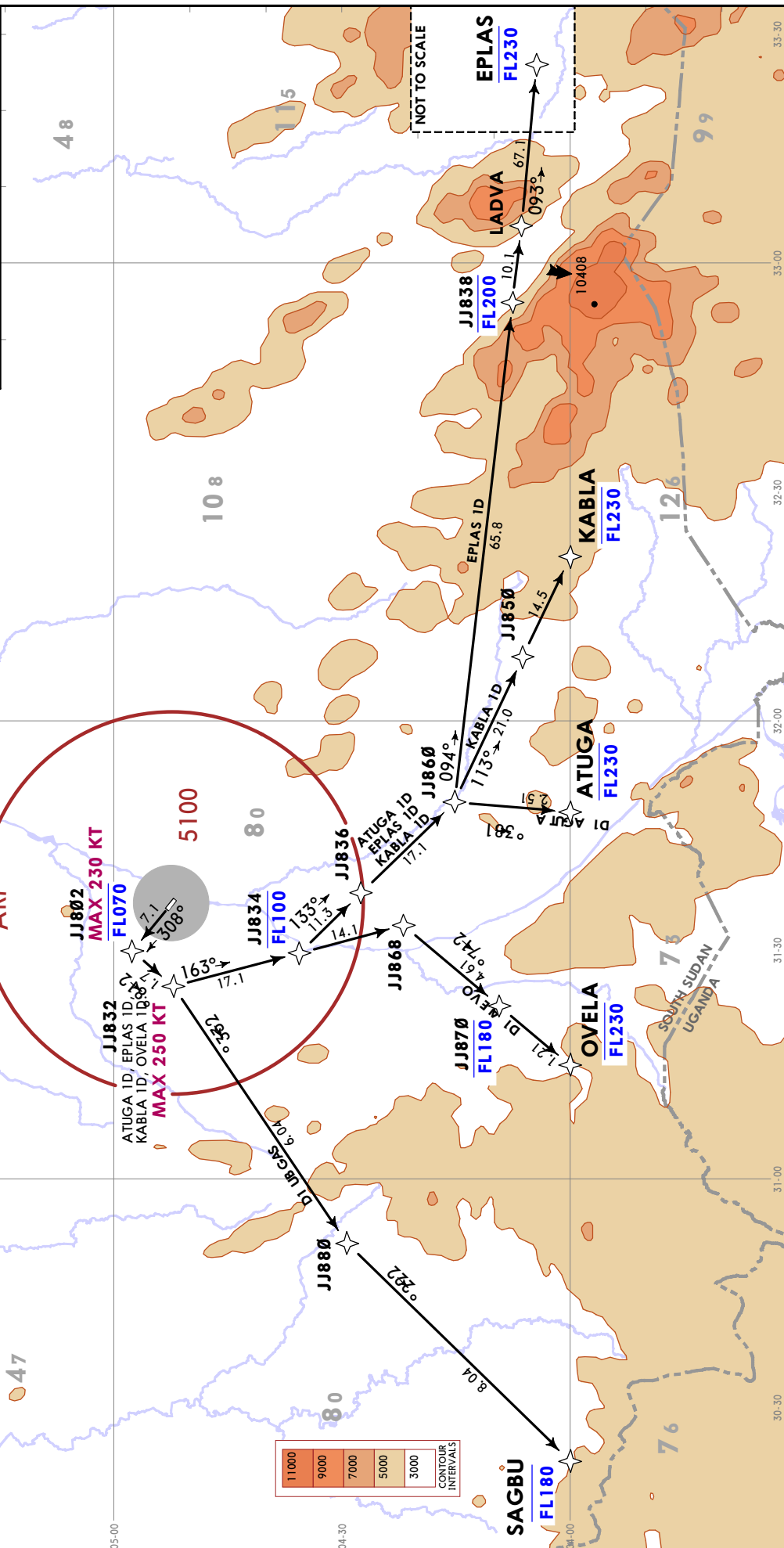
**RNAV (GNSS) DEPARTURES
 (RWY 31)**



SID	ROUTING
ATUGA 1D	Climb on 308° track to JJ802, to JJ832, to JJ834, to JJ836, to JJ860, to ATUGA.
EPLAS 1D	Climb on 308° track to JJ802, to JJ832, to JJ834, to JJ836, to JJ860, to EPLAS.
KABLA 1D	Climb on 308° track to JJ802, to JJ832, to JJ834, to JJ836, to JJ860, to JJ850, to KABLA.
OVELA 1D	Climb on 308° track to JJ802, to JJ832, to JJ834, to JJ868, to JJ870, to OVELA.
SAGBU 1D	Climb on 308° track to JJ802, to JJ832, to JJ880, to SAGBU.

These SIDs require a minimum climb gradient of 3.5% up to 3700 due to terrain.

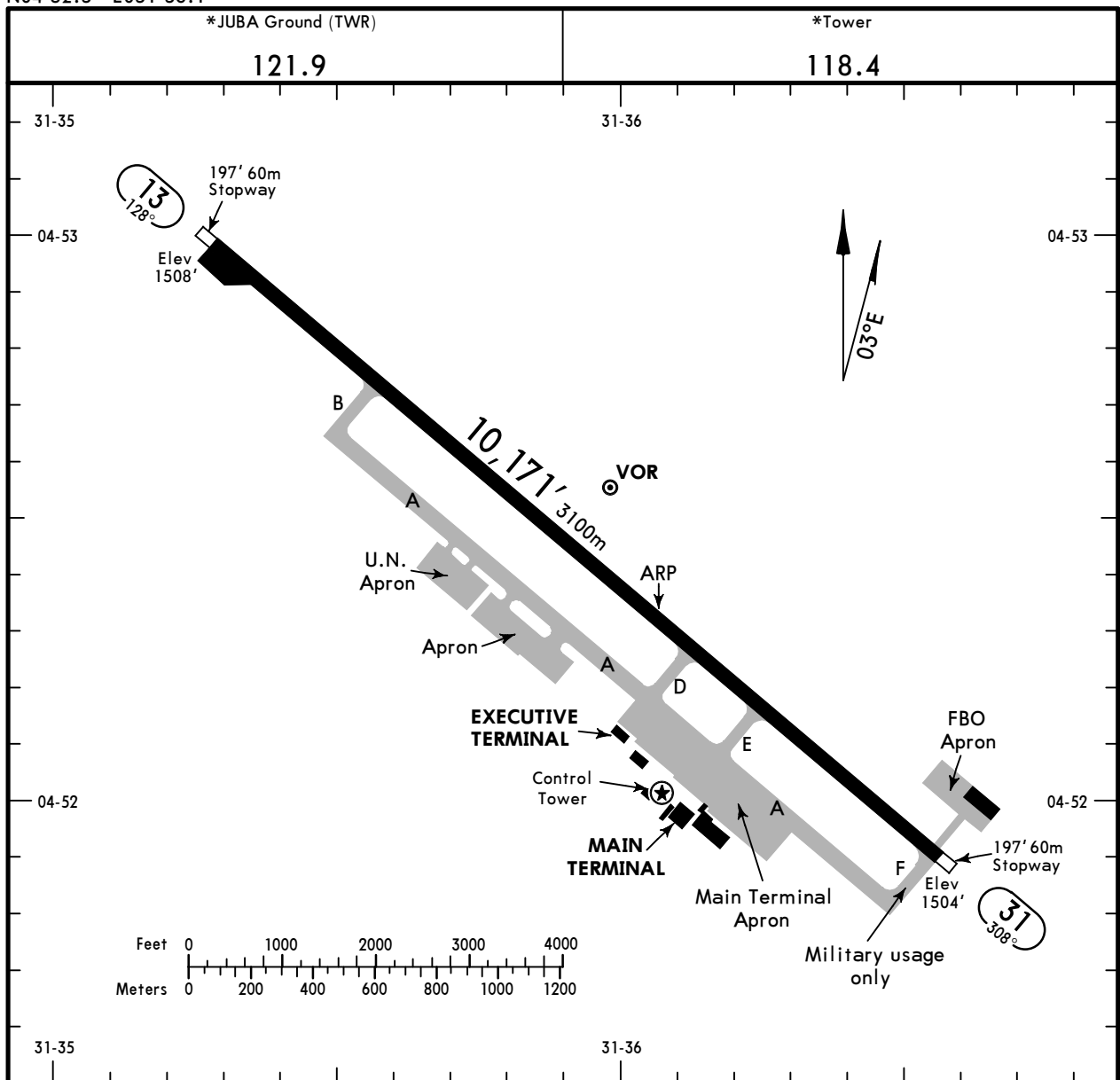
Gnd speed-KT	75	100	150	200	250	300
3.5% V/V (fpm)	266	354	532	709	886	1063



HJJJ/JUB
 Apt Elev **1512'**
 N04 52.3 E031 36.1

JEPPESEN
 26 AUG 22 **(10-9)** Eff 8 Sep

JUBA, SOUTH SUDAN
JUBA



ADDITIONAL RUNWAY INFORMATION

RWY	Landing Lights	USABLE LENGTHS			WIDTH
		Threshold	Glide Slope	TAKE-OFF	
13	HIRL (60m) CL (30m) HIALS ① APAPI-L (3.00°)				148'
31	HIRL (60m) CL (30m) ALS ① APAPI-L (3.00°)				45m

① Configuration unknown.

TAKE-OFF						
RL & CL & relevant RVR	RL & CL	RL & RCLM	RL or CL	RL or RCLM	Adequate Vis Ref	
		DAY	NIGHT	DAY	DAY	NIGHT
TDZ R150m	R200m	R300m		R400m	R/V500m	NA
Mid R150m						
Rollout R150m						

HJJJ/JUB

26 AUG 22
Eff 8 Sep

JEPPESEN
10-9S

EASA AIR OPS
JUBA, SOUTH SUDAN
JUBA

STRAIGHT-IN RWY		A	B	C	D
13	ILS	1718'(210')	1730'(222')	1738'(230')	1749'(241')
	FULL	① R550m	① R550m	① R550m	① R550m
	ALS out	R1200m	R1200m	R1200m	R1300m
	② LOC	1930'(422')	1930'(422')	1930'(422')	1930'(422')
		R1300m	R1300m	R1300m	R1300m
	ALS out	R1500m	R1500m	R2000m	R2000m
	RNP	1798'(290')	1808'(300')	1808'(300')	1818'(310')
	LNAV/VNAV	R750m	R750m	R750m	R750m
	ALS out	R1400m	R1400m	R1400m	R1400m
	② RNP	1910'(402')	1910'(402')	1910'(402')	1910'(402')
	LNAV	R1200m	R1200m	R1200m	R1200m
	ALS out	R1500m	R1500m	R1900m	R1900m
	② VOR	1930'(422')	1930'(422')	1930'(422')	1930'(422')
		R1300m	R1300m	R1300m	R1300m
	ALS out	R1500m	R1500m	R2000m	R2000m
31	RNP	1864'(360')	1874'(370')	1874'(370')	1884'(380')
	LNAV/VNAV	R1400m	R1500m	R1500m	R1500m
	ALS out	R1500m	R1500m	R1700m	R1700m
	② RNP	1960'(456')	1960'(456')	1960'(456')	1960'(456')
	LNAV	R1500m	R1500m	R1900m	R1900m
	ALS out	R1500m	R1500m	R2100m	R2100m
	② VOR	2000'(496')	2000'(496')	2000'(496')	2000'(496')
		R1500m	R1500m	R2100m	R2100m
	ALS out	R1500m	R1500m	R2300m	R2300m

① R750m when a Flight Director or Autopilot or HUD to DA is not used.

② Continuous Descent Final Approach.

CIRCLE-TO-LAND ③	100 KT	135 KT	180 KT	205 KT
After ILS and VOR apch	2260'(748') V1500m	2270'(758') V1600m	2860'(1348') V2400m	2860'(1348') V3600m

③ Not authorized West of runway

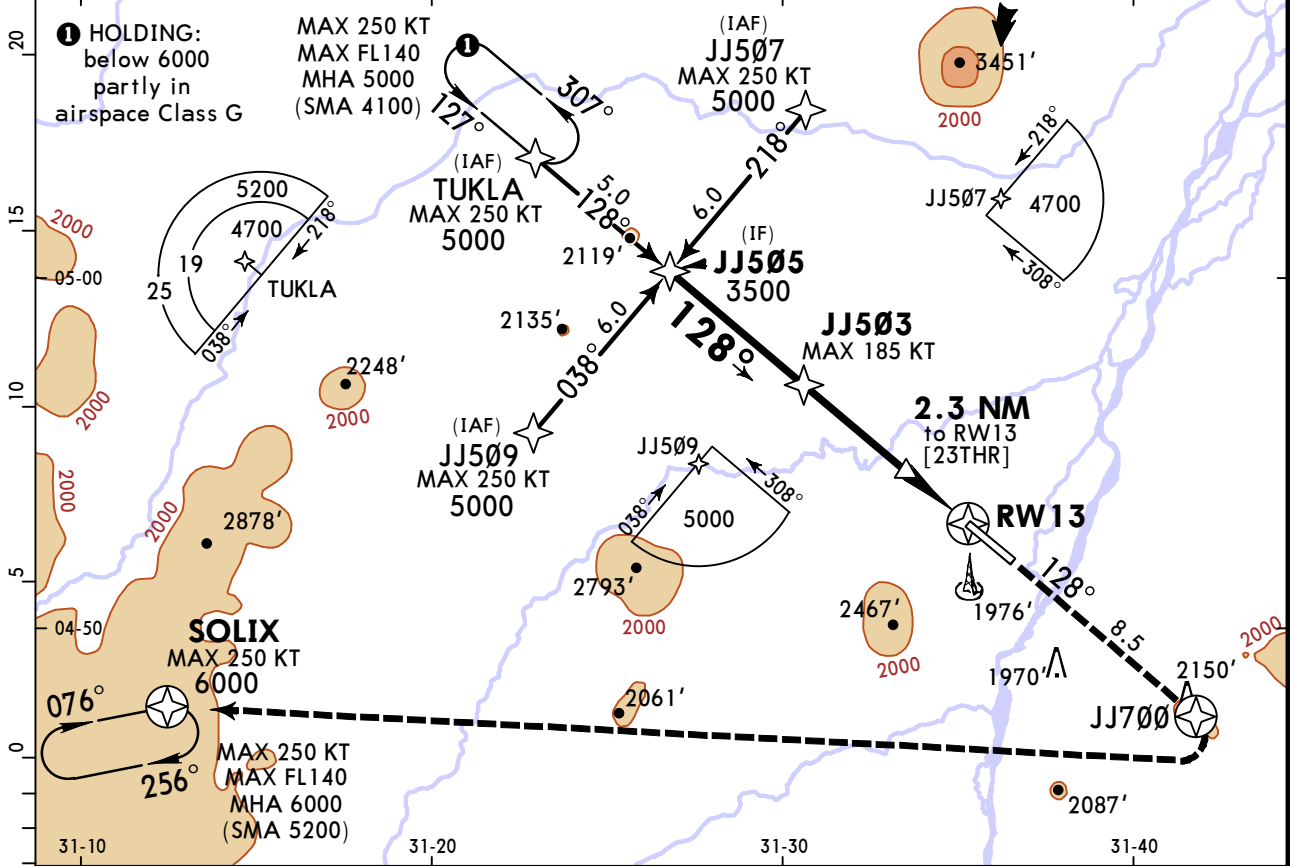
TAKE-OFF								
RL & CL & relevant RVR		Low Visibility Take-off		RL or RCLM	RL or CL	Adequate Vis Ref		
		RL & CL	RL & RCLM			RL or CL	DAY	NIGHT
			DAY			NIGHT		
TDZ R150m	Mid R150m	Rollout R150m	R200m	R300m	R/V400m	R/V500m	NA	

HJJJ/JUB
JUBA

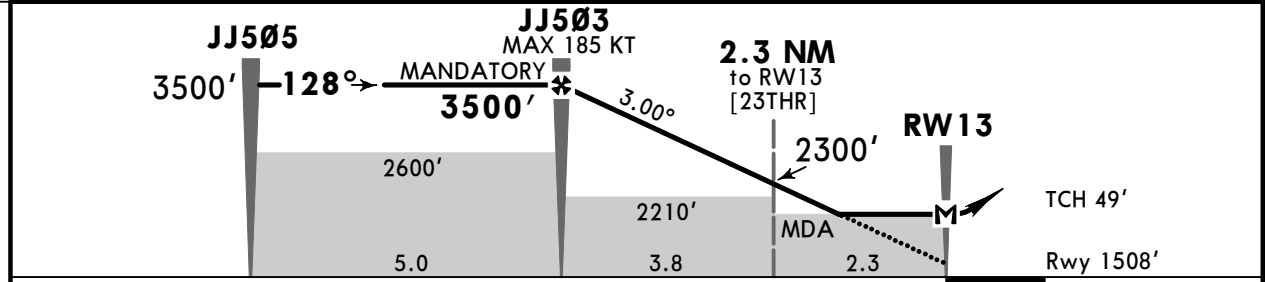
JEPPESSEN
26 AUG 22 (12-1) Eff 8 Sep

JUBA, SOUTH SUDAN
RNP Rwy 13

*JUBA Approach		*JUBA Tower		*Ground	
123.9		118.4		121.9	
RNAV	Final Apch Crs 128°	JJ503 MANDATORY 3500' (1992')	LNAV/VNAV DA(H) Refer to Minimums	Apt Elev 1512' Rwy 1508'	5100 MSA ARP
MISSED APCH: Climb on course 128° to 6000' to JJ700 (MAX 250 KT). Then turn RIGHT direct to SOLIX and join holding, or as directed.					
RNP apch.	Alt Set: hPa	Rwy Elev: 54 hPa	Trans level: By ATC	Trans alt: 6000'	
LNAV-VNAV effective VPA > 3.5° above 58°C, min temperature LNAV-VNAV: 0°C.					



DIST to RW13	6.0	5.0	4.0	3.0	2.0	1.0
ALTITUDE	3470'	3150'	2830'	2510'	2190'	1880'



Gnd speed-Kts	70	90	100	120	140	160	HIALS APAPI-L	6000' ↑ on 128°
Glide Path Angle	3.00°	372	478	531	637	743		
MAP at RW13								

PANS OPS	Std				STRAIGHT-IN LANDING			
	LNAV/VNAV				LNAV			
	DA(H)		BC: 1808' (300')		CDFA		DA/MDA(H) 1910' (402')	
	A: 1798' (290')		D: 1818' (310')		ALS out		ALS out	
A								R1500m
B	R750m							R1200m
C		R1400m						R1900m
D								

HJJJ/JUB
JUBA

JEPPESEN

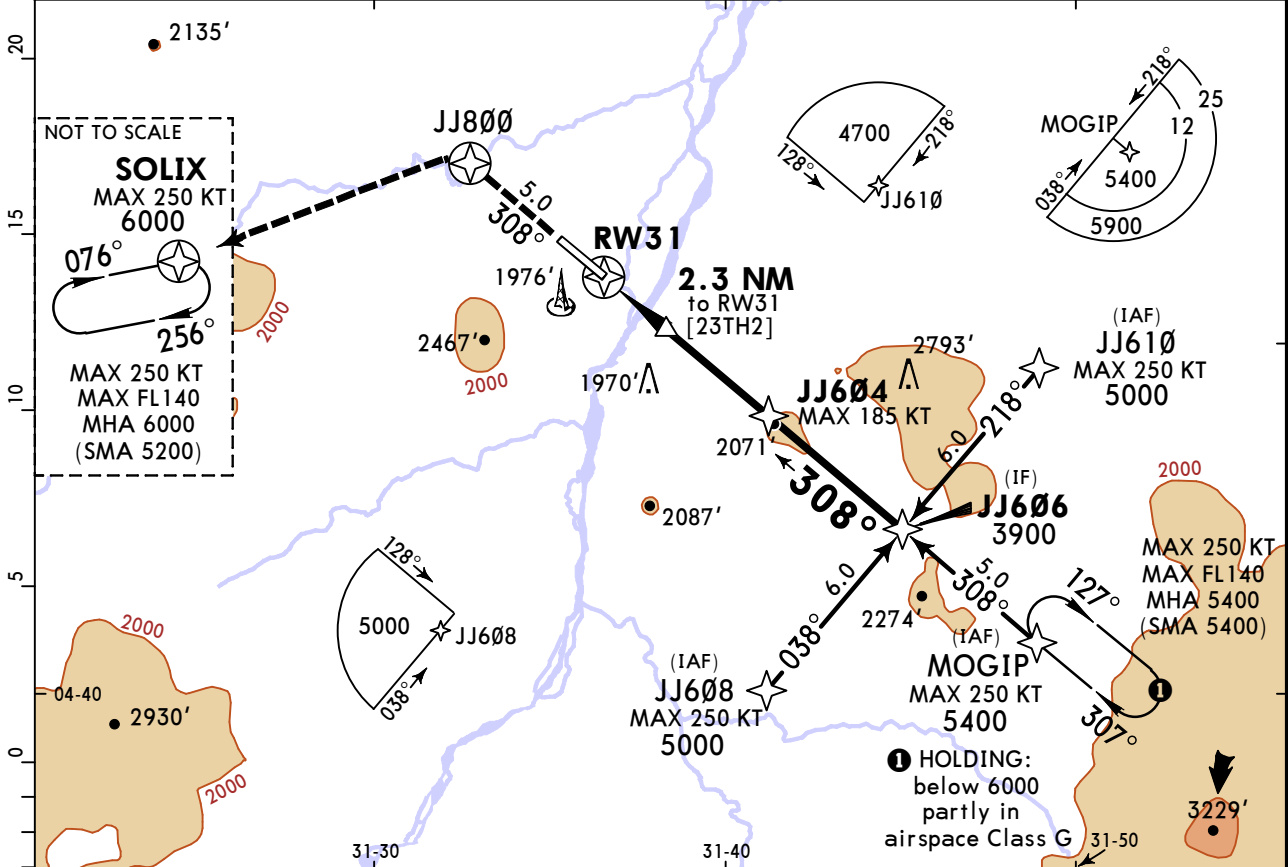
JUBA, SOUTH SUDAN

26 AUG 22 (12-2)

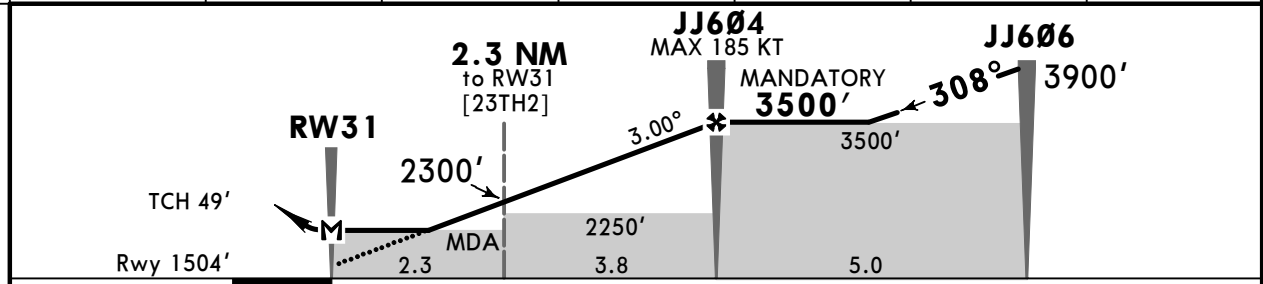
Eff 8 Sep

RNP Rwy 31

*JUBA Approach		*JUBA Tower		*Ground	
123.9		118.4		121.9	
RNAV	Final Apch Crs 308°	JJ604 MANDATORY 3500' (1996')	LNAV/VNAV DA(H) Refer to Minimums	Ap ^t Elev 1512' Rwy 1504'	5100 MSA ARP
MISSED APCH: Climb on course 308° to 6000' to JJ800 (MAX 250 KT). Then turn LEFT direct to SOLIX and join holding, or as directed.					
RNP apch.	Alt Set: hPa	Rwy Elev: 54 hPa	Trans level: By ATC	Trans alt: 6000'	
LNAV-VNAV effective VPA > 3.5° above 58°C, min temperature LNAV-VNAV: 0°C.					



DIST to RW31	1.0	2.0	3.0	4.0	5.0	6.0
ALTITUDE	1870'	2190'	2510'	2830'	3150'	3460'



Gnd speed-Kts	70	90	100	120	140	160	ALS APAPI-L	6000' ↑ on 308°
Glide Path Angle	3.00°	372	478	531	637	743		
MAP at RW31								

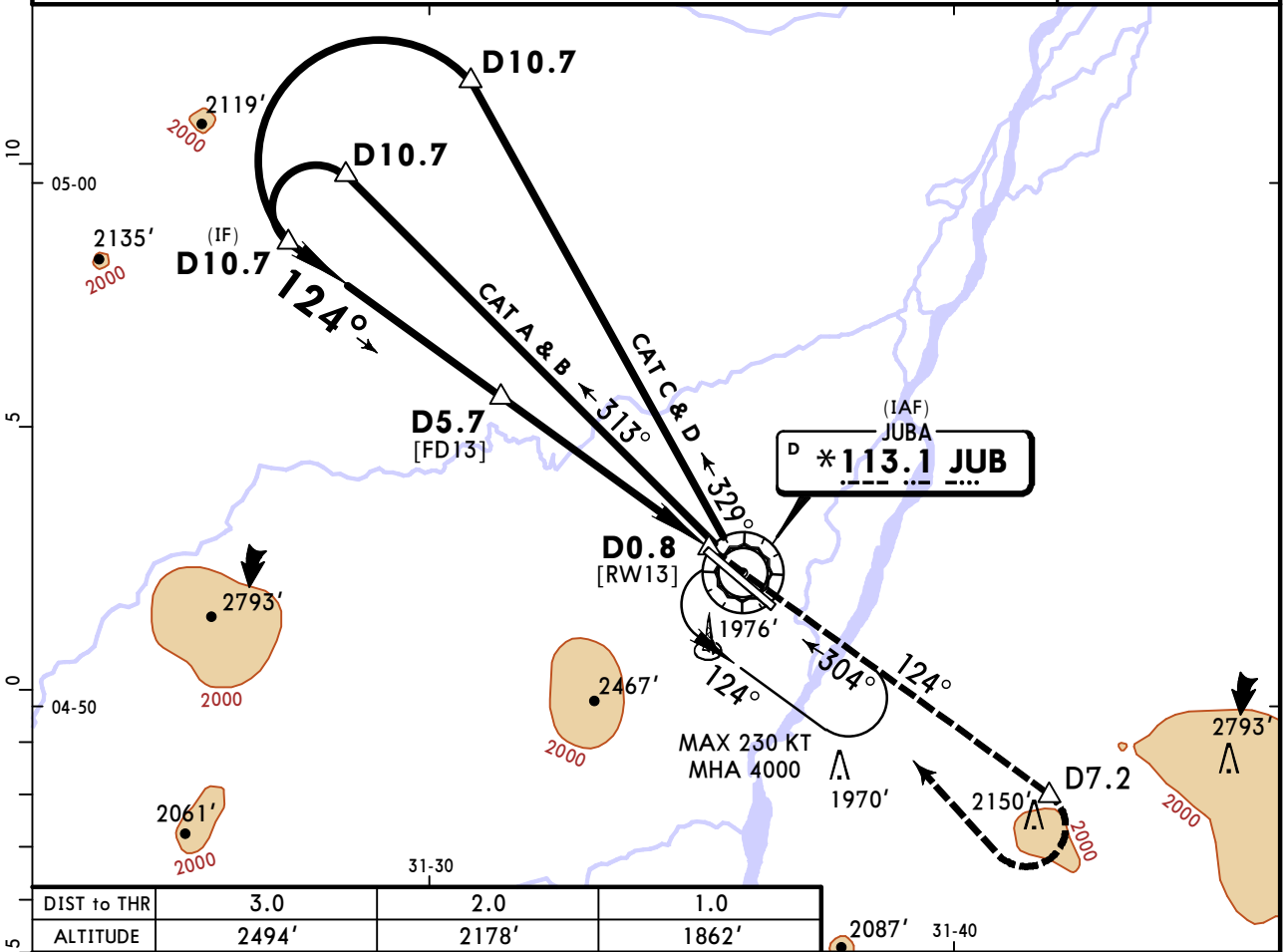
PANS OPS	Std				STRAIGHT-IN LANDING			
	LNAV/VNAV				LNAV			
	DA(H) BC: 1874' (370')				CDFA			
	A: 1864' (360') D: 1884' (380')				DA/MDA(H) 1960' (456')			
	ALS out				ALS out			
A	R1400m		R1500m		R1500m			
B	R1500m		R1700m		R1900m			
C	R1500m		R1700m		R2100m			
D	R1500m		R1700m		R2100m			

HJJJ/JUB
JUBA

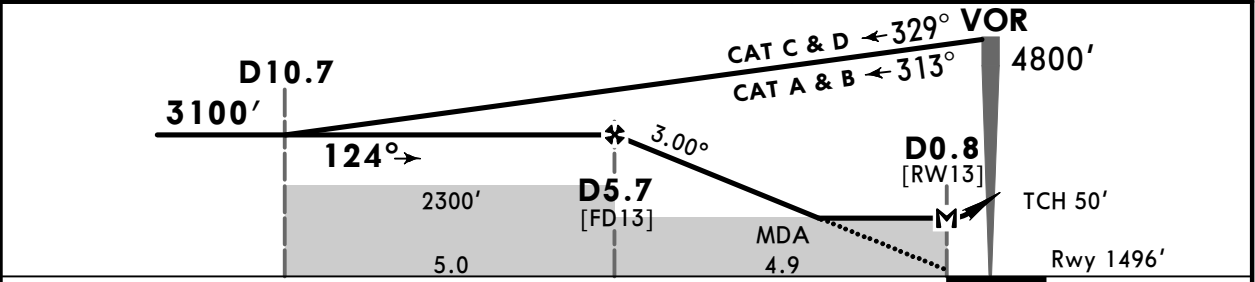
JEPPesen
30 JUL 21 (13-1) Eff 12 Aug

JUBA, SOUTH SUDAN
VOR DME Rwy 13

*JUBA Approach		*JUBA Tower		*Ground (TWR)	
123.9		118.4		121.9	
VOR JUB *113.1	Final Apch Crs 124°	D5.7 3100' (1604')	DA/MDA(H) 1930' (434')	Apt Elev 1496' Rwy 1496'	
MISSED APCH: Climb STRAIGHT AHEAD on R-124 to D7.2, turn RIGHT to VOR at 4800' and enter holding, or as directed. MAX 210 KT.					
Alt Set: hPa	Rwy Elev: 54 hPa	Trans level: FL80	Trans alt: 6000'	MSA JUB VOR	



DIST to THR	3.0	2.0	1.0
ALTITUDE	2494'	2178'	1862'



Gnd speed-Kts	70	90	100	120	140	160	MIALS PAPI	210 KT MAX	D7.2 ↑ on R-124
Descent Angle	3.00°	372	478	531	637	743			
MAP at D0.8									

PANS OPS	Std STRAIGHT-IN LANDING		CIRCLE-TO-LAND	
	CDFA		Not authorized West of runway	
	DA/MDA(H) 1930' (434')			
	ALS out		Max Kts	MDA(H)
	A	R1500m	100	2260' (764') V1500m
B	R1500m	135	2270' (774') V1600m	
C	R1600m	180	2860' (1364') V2400m	
D	R2000m	205	2860' (1364') V3600m	

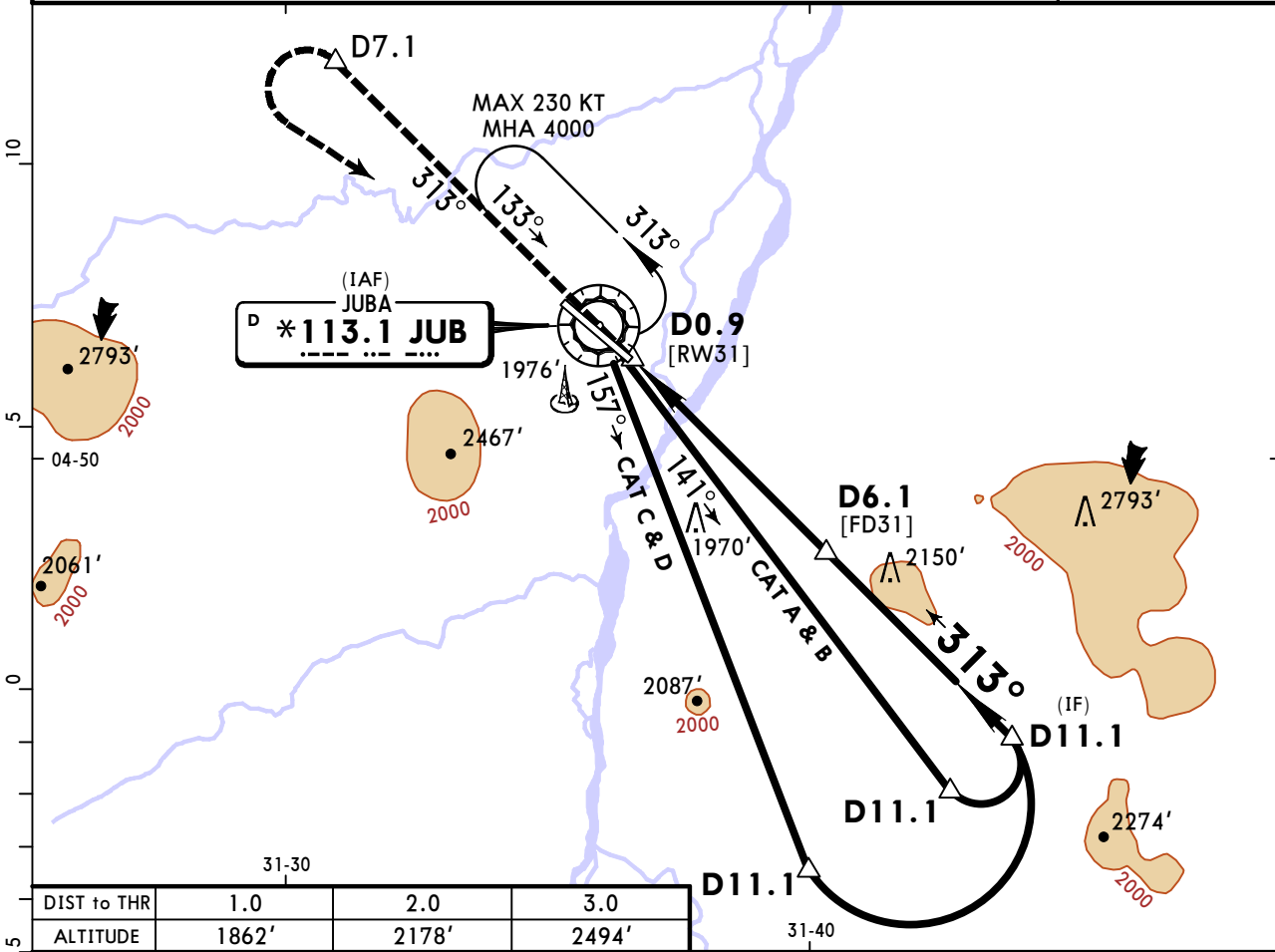
1 VNAV DA(H) in lieu of MDA(H) depends on operator policy.
 CHANGES: Country name . Communications. © JEPPESEN, 2018, 2021. ALL RIGHTS RESERVED.

HJJJ/JUB
JUBA

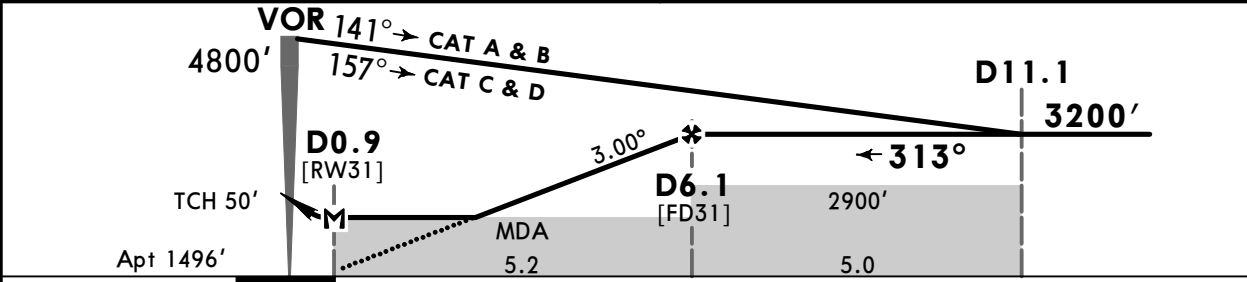
JEPPesen
30 JUL 21 (13-2) Eff 12 Aug

JUBA, SOUTH SUDAN
VOR DME Rwy 31

*JUBA Approach		*JUBA Tower		*Ground (TWR)	
123.9		118.4		121.9	
VOR JUB *113.1	Final Apch Crs 313°	D6.1 3200' (1704')	DA/MDA(H) 2000' (504')	Apt Elev 1496'	
MISSED APCH: Climb STRAIGHT AHEAD on R-313 to D7.1, turn LEFT to VOR at 4800' and enter holding, or as directed. MAX 210 KT.					
Alt Set: hPa	Apt Elev: 54 hPa	Trans level: FL80		Trans alt: 6000'	MSA JUB VOR



DIST to THR	1.0	2.0	3.0
ALTITUDE	1862'	2178'	2494'



Gnd speed-Kts	70	90	100	120	140	160	MIALS PAPI 210 KT MAX D7.1 on R-313
Descent Angle	3.00°	372	478	531	637	743	
MAP at D0.9							

PANS OPS	Std STRAIGHT-IN LANDING		CIRCLE-TO-LAND	
	CDFA		Not authorized West of runway	
	DA/MDA(H) 2000' (504')			
	ALS out		Max Kts	MDA(H)
	A	R1500m	100	2260' (764') V1500m
B	R1500m	135	2270' (774') V1600m	
C	R1900m	180	2860' (1364') V2400m	
D	R2400m	205	2860' (1364') V3600m	

1 VNAV DA(H) in lieu of MDA(H) depends on operator policy.
 CHANGES: Country name. Communications. © JEPPesen, 2018, 2021. ALL RIGHTS RESERVED.

Chart changes since cycle 15-2023

ADD = added chart, REV = revised chart, DEL = deleted chart.

ACT	PROCEDURE IDENT	INDEX	REV DATE	EFF DATE
-----	-----------------	-------	----------	----------

JUBA, (JUBA - HJJJ)

TERMINAL CHART CHANGE NOTICES

Chart Change Notices for Airport HJJJ

Type: Terminal

Effectivity: Temporary

Begin Date: 20220908

End Date: Until Further Notice

(11-1, 13-1, 13-2) ILS or LOC Rwy 13, VOR DME Rwy 13 and VOR DME Rwy 31 apch procedure not usable due to long term equipment outage, based on (AIRAC AMDT 03/22).